



Nexus Issue 7
15 May 2023

The Canteen is open on
Wednesday and Friday

Week 4

Tuesday 16 May

Indigenous Tours Incursion
Kindy & Yr's 1-3

Wednesday 17 May

Indigenous Tours Incursion
PP & Yr's 4-6

Friday 19 May

Yr 2 Rm 7 Assembly

Week 5

Friday 26 May

Winter Carnival

Week 6

Friday 2 June

Yr 4 Rm 12 Assembly

LATEST TERM PLANNER

TERM DATES

WEBSITE

EMAIL US

A Message from the Principal

Attadale PS Families,

Welcome to Week 4! Our students and staff have made a great start to the term with many exciting projects happening in classrooms around our school. Our new staff have settled in well and have helped to make a positive impact in classrooms. At the end of the term, you will receive a Semester 1 report which gives you an insight into how your child(ren) has achieved over the course of the year as well as an indication of their attitude and effort. Throughout their school life, each child will have their areas of strength and challenge but a child's attitude and effort towards their learning is another indicator of future success and the ability to overcome challenges.

I trust all the mothers out there were looked after yesterday in between junior sports and family catch ups. For those who attended on Friday I'm sure you enjoyed the event put on by our amazing P & C volunteers. It was great to see so many of you were able to make it down.

On Friday I enjoyed having lunch with a group of students from across the school whose names were drawn in the Pizza with the Principal raffle. We enjoyed a chat and pizzas from our canteen. Raffle tickets are earned from home reading, and it was great to see so many tickets in the raffle box. You can never do enough reading at home with your kids. Research proves that reading to your kids, no matter what age or reading ability, has so many positive benefits. Don't be scared to pull out a favourite from your childhood and share with your kids.

Enjoy the week ahead!

Phil Springett



ACKNOWLEDGEMENT OF COUNTRY

We would like to acknowledge the traditional owners of the land on which we meet today, the Whadjuk people of the Noongar Nation of Australia and pay our respects to the elders of the past, present and emerging.



RESOURCES TECHNOLOGY SHOWCASE

Year 3/4 & Year 5/6
Enrichment groups

Last term, we went to the Perth Convention Centre to experience the Resources Technology Showcase.

We saw lots of different types of technology being used in the mining, space and defence industry.



"My favourite activity at the excursion was the VR where you are in a spaceship and you explore around the space ship". Wayden

"My favourite part was seeing a robotic dog that could dance and prance" - Caitlyn

"VR was my favourite thing because I have never done VR before and it's kind of fun" - Oliver A

"One of my favourite things to do there was the RAC VR helicopter. It was amazing how I could see a helicopter rescue in VR" - Quinn



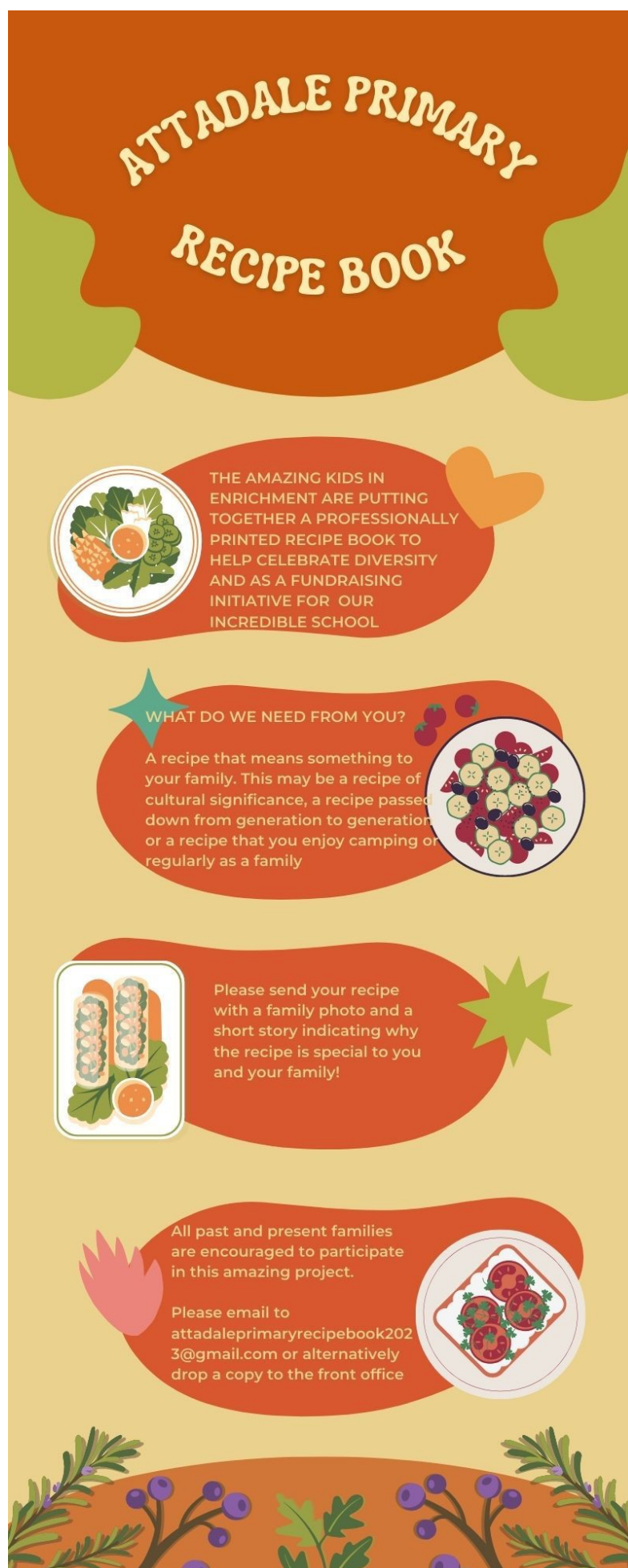
In conjunction with the Academic Enrichment students and Rebecca Armstrong, we will be collecting recipes from across the school community to incorporate into a professionally published recipe book!

Our aim is to highlight the diversity amongst our brilliant school community and help celebrate Attadale Primary across generations.

This is an exciting project which will incorporate the history of our school and the surrounding areas as well as our local cultural heritage.

Please see flyer for more details.

We look forward to your contributions!



Canteen



Specials

Week 4 - 15th May 2023

Recess

Warm Cinnamon Apple Cups \$3.00

Warm diced apple tossed in cinnamon served with vanilla bean yoghurt
+ Granola
+ Lactose Free Yoghurt



Cheesy Corn Quesadilla \$2.50

Mouth watering tortillas parcels of melted cheese and sweet corn kernels perfect to warm any belly.



Lunch

Chicken Schnitzel Wrap \$5.00

Beautifully crumbed chicken schnitzel and lettuce in a 5inch wrap

- no sauce, Mayo / Tomato sauce
- add cheese .50c



Attalicious Pizza \$5.00

Wednesday's only

Perfect portions of pizza with choice of toppings. All made with our Attalicious special sauce.

- Margarita
- Ham & Cheese
- Hawaiian



Similar to photos. Full description in the spriggy app.

Free RATs

To help with the early detection and treatment of COVID, the Department of Education is providing students with free Rapid Antigen Tests (RATs). If you would like some, please pop into the school office to collect .

Enrolments

Is your child 4 years old by 30 June 2023? They can apply to come to Kindergarten in 2024! Applications are now open and will **close on 21 July 2023**.

Premier's Reading Challenge



Students are invited to uncover great mysteries through the world of books for the Premier's Reading Challenge. The challenge is to log 12 or more book titles during the challenge. This year there are new and more extraordinary prizes for readers. The 2023 Premier's Reading Challenge will run from Monday 8 May 2023 to Friday 8 September 2023. Head to the [website](#) for more information.

Mathematics Parent Workshop

MATHEMATICS PARENT WORKSHOP

9:00
AM



31 MAY
2023



JOIN US

RSVP
asiri.perera@education.wa.edu.au

Hear about our school's approach to teaching and learning mathematics using the latest evidence-based practice.

Learn effective ways to support your child at home.

This presentation is suitable for parents of all year groups.

Cultural Awareness Incursion



In preparation for Reconciliation Week we will be hosting an incursion from Indigenous Tours this week. There is no charge to parents as this incursion is part of our Reconciliation Action Plan budget.

Kindy Blue and Green students are very welcome to join Kindy Red in the hall on Tuesday, 16 May at 9am with their parents in attendance.

Tuesday May 16th Incursion times and year levels:

9.00am - 9.45am - Kindergarten Red

9.55am - 10.40am - Year 1 classes

11.00am - 11.45am - Year 2 classes

12.00 - 12.45pm - Year 3 classes

Wednesday May 17th Incursion times and year levels:

9.00am - 9.45am - Pre-Primary 1 and Pre-Primary 2 classes

9.55am - 10.40am - Year 4 classes

11.00am - 11.45am - Year 5 classes

12.00 - 12.45pm - Year 6 classes

First Aid Courses



ATTADALE PRIMARY SCHOOL P&C

Our P & C are running some first aid courses.
Click the link to book online.

<https://www.trybooking.com/CHRA> or scan
the QR code.

CERTIFIED FIRST AID COURSES



HLTAID009- CPR Refresher
HLTAID011 - Provide First Aid
HLTAID012 - First Aid in a Child
Care Setting

MONDAY/TUESDAY
12TH-13TH JUNE 2023 6:30PM
ATTADALE PRIMARY SCHOOL HALL



REGISTER VIA TRYBOOKING - PLACES LIMITED
[WWW.TRYBOOKING.COM/CHRA](https://www.trybooking.com/CHRA)

Triple P - Positive Parenting Program

On Tuesday 30 May 2023 from 6-8pm, Sarah Boyd, our School Psychologist (Provisionally Registered) will be co-presenting the Triple P – Power of Positive Parenting Seminar at Kardinya Primary School with parents from Attadale Primary School invited to attend. The seminar introduces five positive parenting principles that can help promote child development, strong family relationships and encourage positive behaviour. We hope to see you there. For more information, please see the attached flyer.

Small changes,
big differences.



Free seminar for parents Triple P – Positive Parenting Program

Triple P seminars give you simple, practical strategies to:

- Promote your child's development and independent skills
- Strengthen family relationships and wellbeing
- Encourage positive behaviour
- Raise resilient, confident children

The Power of Positive Parenting

Learn about the five positive parenting principles that can help you promote your child's development, strong family relationships and encourage positive behaviour.

Tuesday 30th May from 6-8pm

All parents will receive a free tip sheet with the content to take home. Light refreshments provided.

BOOKINGS AND MORE INFORMATION

Register online by [clicking here](https://www.triplep-parenting.net.au/wa) or searching for this session by location (Kardinya) at www.triplep-parenting.net.au/wa

Please note: there will be no crèche available and it is recommended that children are not brought to the session.



www.triplep-parenting.net.au/wa

High School Enrolments

Enrolments for 2023 are now open at Melville Senior High School.

The enrolment form can be found online [HERE](#).

Enrolment applications can be submitted electronically to

Melville.SHS.Admissions@education.wa.edu.au or in person via the front office at the school.

The due date for this form is **June 30** (the last day of Term 2).

If you have further questions about the school, please contact our front office at [\(08\) 6274 1300](tel:0862741300).

School tours are on the following dates:

- Wednesday, May 10, from 9 am – 10 am
- Wednesday, June 14, from 9 am – 10 am
- Wednesday, June 14, from 4.30 pm – 5.30 pm

Bookings are essential on our website: www.melville.wa.edu.au.

2023 Contributions and Charges

Dear parents/carers, just a friendly reminder that we are now accepting payment for 2023 Voluntary Contributions and charges. You can deposit into the school account, call with credit card details or come into the office to pay with cash/eftpos. Details on the Contributions and Charges can be found [here](#)
Attadale PS BSB 066163 ACC 00903 316 (please use child's surname as a reference).

Join us on Facebook

We are excited to invite you to become a member of the Attadale Primary School Closed Facebook Group. You can join the group here <https://www.facebook.com/groups/attadaleprimaryschool>
Please make sure to answer the validation questions or we will be unable to accept your request.

What's on for Kids

Out of school activities for your child.

Australian Sports Camps — A.S.C. run 3-day sports camps for primary-aged children in the school holidays. It is a great opportunity for children to improve their skills or learn a new sport. [Brochure here](#)

K2 Dance — [Term 2 Flyer](#)

Keyed Up Music Lessons – in the Hall Keyed Up Music will be teaching keyboard and guitar group lessons after school. Lessons start at \$19.80 for a small group per lesson. If you are interested in your son/daughter learning either guitar or keyboard, please call Savanna on 6107 8841 or 0479 171 424 or enrol at www.keyedupmusic.com.au/enrolment-form [Brochure here](#)

Marshall's Tennis Academy – You can learn before school at Attadale PS. To enrol please go to marshallstennis.com.au. Look for Schools Coaching, then scroll down to Attadale Primary School.

TDC The Dance Collective - [Brochure here](#)